



ARCHITECTURAL
CONCRETE MASONRY
[DIVISION 4]



OUR STORY

The Pacific Coast Building Products family originated in 1953 when a young man opened his business in Sacramento, California. Through humble beginnings of Anderson Lumber, owner Fred Anderson expanded his company into several building product-related businesses and has flourished ever since.

In 1979, Basalite® Concrete Products became part of the PCBP family. Today, Basalite has become one of the largest suppliers of concrete masonry products in Western North America. Our product lines include structural block, interlocking paving stones, wall systems, retaining walls, ornamental and garden products and a full range of packaged concrete/mortar products.

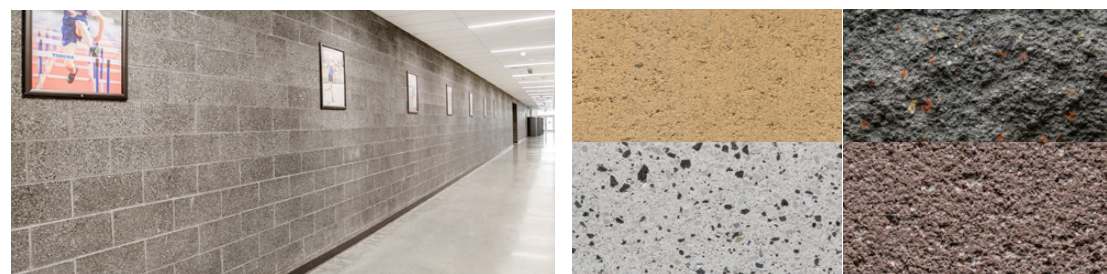
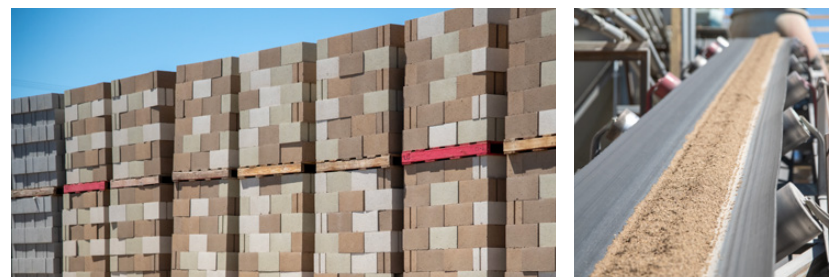


TABLE OF CONTENTS

CMU ADVANTAGES | 4

CMU ENERGY DATA | 6

CMU COLORS | 7

PRECISION

GROUND FACE

SPLIT FACE

SHOT BLAST

MORTAR COLORS | 21

CMU TEXTURES | 22



CONCRETE MASONRY

CMU HAS MORE ADVANTAGES THAN YOU CAN IMAGINE

MOISTURE PROTECTION & EFFLORESCENCE CONTROL

When it comes to moisture protection, you can specify an Integral Water Repellent (IWR) in both Basalite® block and mortar. During the manufacturing process we use Integral Water Repellent admixtures that are mixed throughout the concrete. The IWR increases resistance to wind-driven rain, moisture penetration, and reduces efflorescence.

RESILIENCY

Buildings and structures with resilient design and materials can recover quicker following disasters, reduce green house emissions and improve the impacts of a building on the health and performance of occupants. Concrete masonry construction has inherent strength, durability, longevity, fire resistance, seismic and blast resistance all of which contribute to the resiliency of the built environment and can contribute to LEED credits

COLORS & TEXTURES

Turn ordinary into a visual masterpiece by blending Basalite® colors, surface textures, sizes and shapes. We offer a large selection of Standard, Premium and special order colors that are available in Precision, Ground Face, Split Face and Shot Blast textures. Speak with your local product expert to get samples.

THERMAL PERFORMANCE


Concrete masonry delivers excellent thermal performance. Fully grouted concrete masonry is considered a heavy mass wall according to California Energy Code. Because of this, a typical fully grouted wall system meets energy code standards without the need for insulation in many California climate zones.


SPECIFY WITH CONFIDENCE

All our products are manufactured to meet or exceed CMU manufacturing standards for strength and durability. Our commitment to providing high-quality products and excellent customer service will ensure that your project will be customized to your needs.

Meet with one of Basalite's CMU experts to help with your project, from the initial planning stages through final engineering and approval.

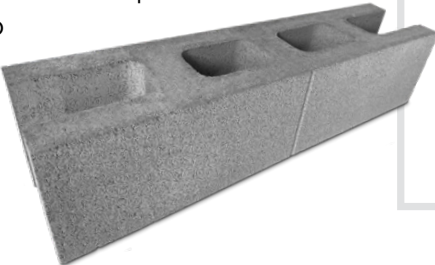
 **REQUEST SAMPLES**
To request product samples visit: basalite-cmu.com/view-sample-library

 **TECHNICAL DOCUMENTS**
Looking for data sheets, specifications, Environmental Product Declarations and technical notes? Visit basalite-cmu.com

 **LOCALLY MADE**
Every Basalite CMU is proudly manufactured in our California facilities, allowing us to deliver precision-made products to you, wherever and whenever you need them.

SHAPES & SIZES

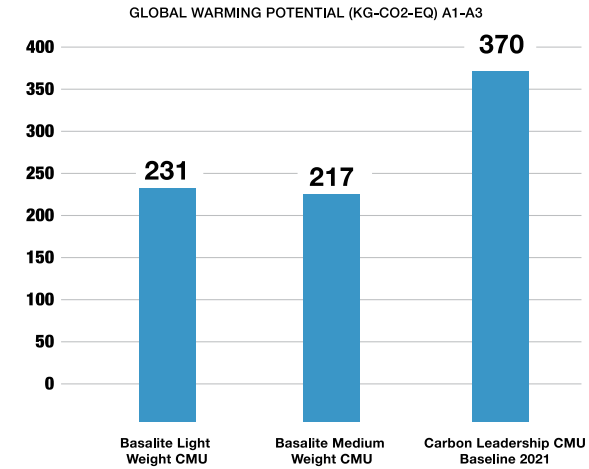
Create unique and memorable design details with Basalite's variety of concrete masonry sizes and shapes. Recent additions to our shapes include a 32" long unit to create new elongated look.



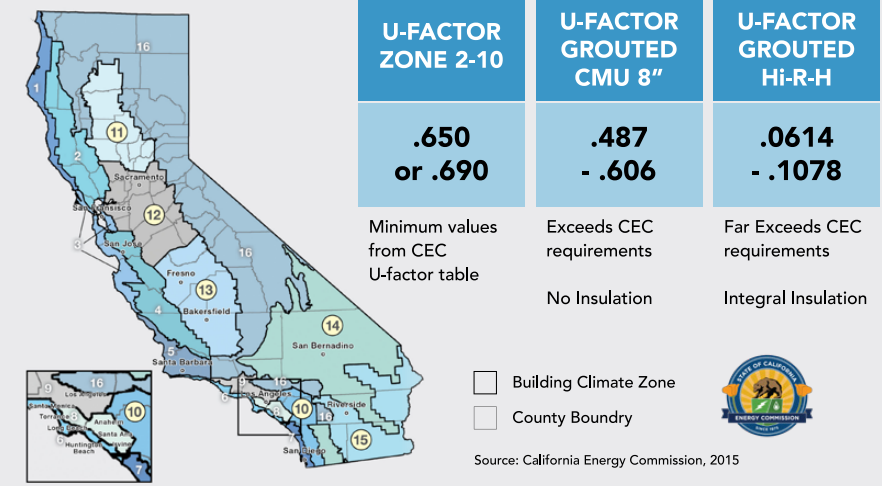
Interested in exploring Basalite's wide range of block products, styles and colors,
Visit us online at basalite-cmu.com
and access a variety of resources and tools designed to assist you with your next project



EPD COMPARISON TO BASELINE

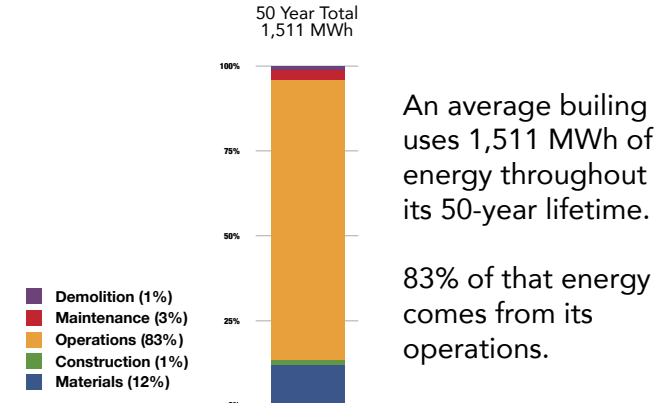


CEC PRESCRIPTIVE REQ'S



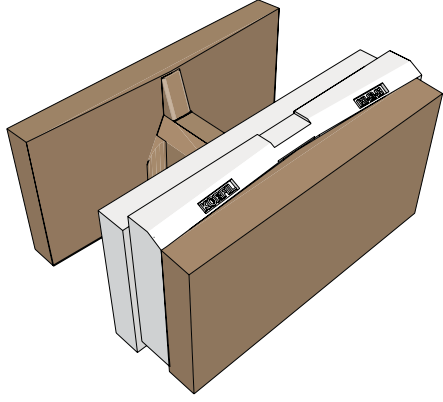
DID YOU KNOW?

LIFE CYCLE ANALYSIS OF ENERGY IMPACT



CMU is the low carbon option in structural concrete wall systems. CMU is naturally low in embodied carbon compared to other concrete products. This is because CMU has always been made using less cement than typical forms of concrete. Cement content is the main driver behind carbon impacts of any concrete product. Basalite and the CMU industry as a whole have been using factory controlled processes to drive down cement content without sacrificing strength. Basalite has introduced Type II cement in our plants in California to further drive down carbon impacts.

Heavy mass walls with CMU provide passive cooling and meet or exceed California energy code standards without insulation. Its true! A standard 8" wide masonry wall exceeds CEC requirements and when left exposed to the interiors space will reduce loads on HVAC systems. Whats more, CMU can be incorporated into the interior to provide vertical mass and further enhance the passive characteristics of any space.



BASALITE HI-R-H SYSTEM

When aggressive energy standards must be met with insulation, Basalite offers an integral-insulation solution call HI-R-H that combines the heavy mass of masonry with the benefits of insulation in one package. The HI-R-H system achieves low u-factors while the mass remains exposed to the interior offering passive cooling to the interior space.

WE OFFER AN EXTENSIVE CONCRETE MASONRY PRODUCT LINE INCLUDING
STRUCTURAL BLOCK | HARDSCAPES | MORTARS AND GROUTS



225 - BASE COLOR



PRECISION

GROUND FACE

SPLIT FACE

SHOT BLAST

725 - BASE COLOR



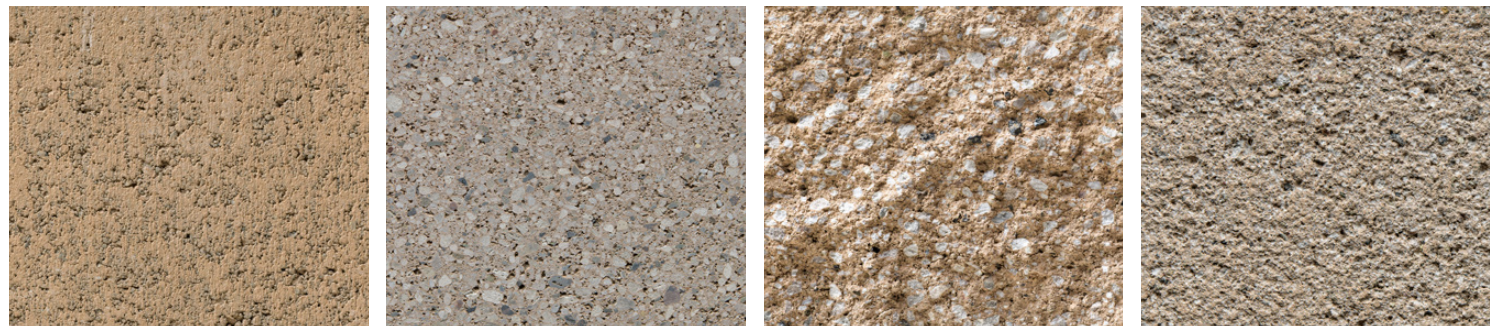
PRECISION

GROUND FACE

SPLIT FACE

SHOT BLAST

345 - BASE COLOR



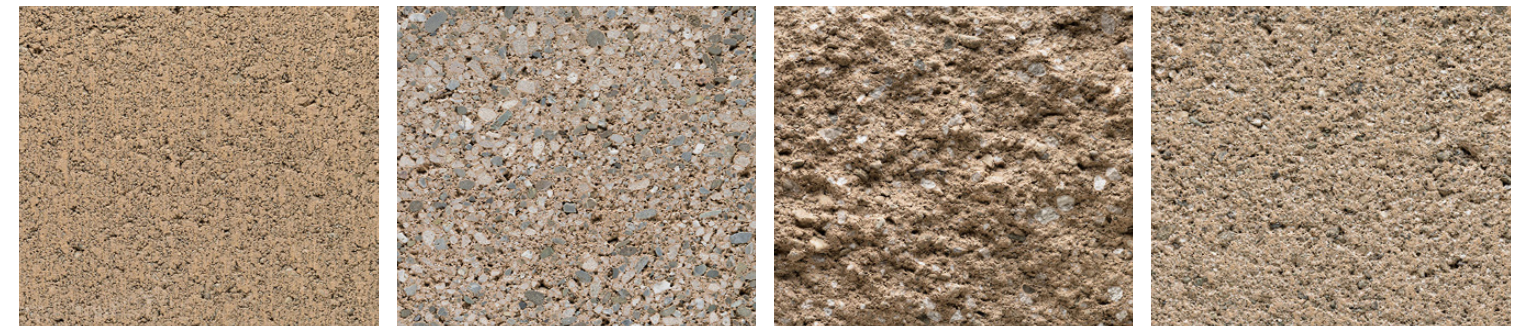
PRECISION

GROUND FACE

SPLIT FACE

SHOT BLAST

745 - BASE COLOR



PRECISION

GROUND FACE

SPLIT FACE

SHOT BLAST

625 - BASE COLOR



PRECISION

GROUND FACE

SPLIT FACE

SHOT BLAST

101 - STANDARD COLOR



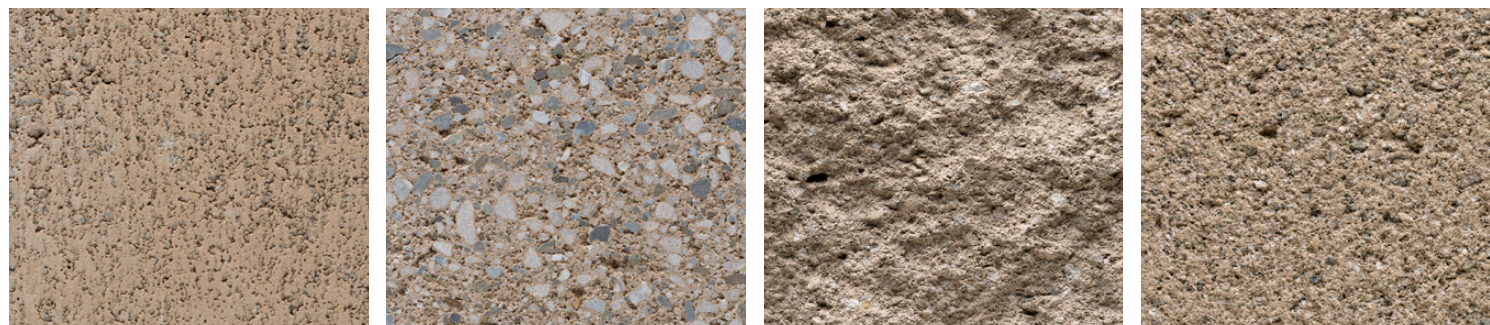
PRECISION

GROUND FACE

SPLIT FACE

SHOT BLAST

645 - BASE COLOR



PRECISION

GROUND FACE

SPLIT FACE

SHOT BLAST

113 - STANDARD COLOR



PRECISION

GROUND FACE

SPLIT FACE

SHOT BLAST

125 - STANDARD COLOR



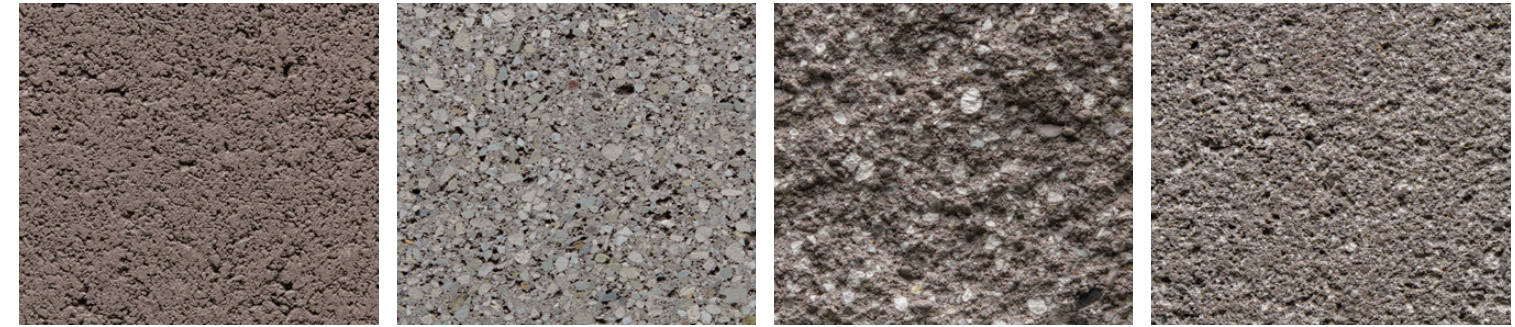
PRECISION

GROUND FACE

SPLIT FACE

SHOT BLAST

327 - STANDARD COLOR



PRECISION

GROUND FACE

SPLIT FACE

SHOT BLAST

128 - STANDARD COLOR



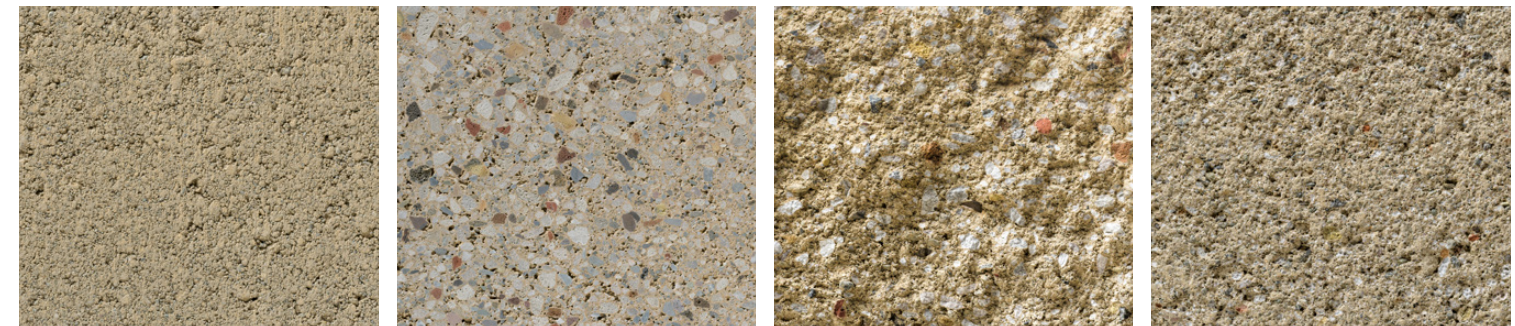
PRECISION

GROUND FACE

SPLIT FACE

SHOT BLAST

335 - STANDARD COLOR



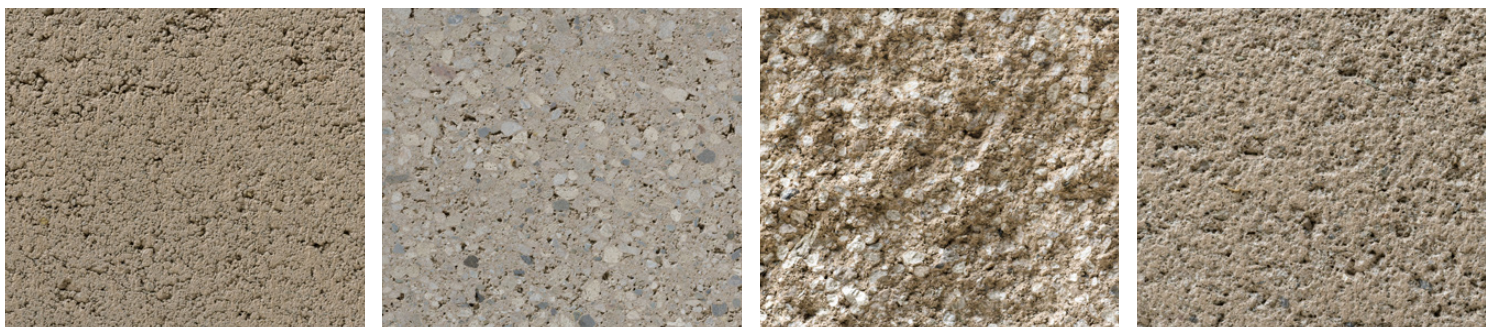
PRECISION

GROUND FACE

SPLIT FACE

SHOT BLAST

136 - STANDARD COLOR



PRECISION

GROUND FACE

SPLIT FACE

SHOT BLAST

336 - STANDARD COLOR



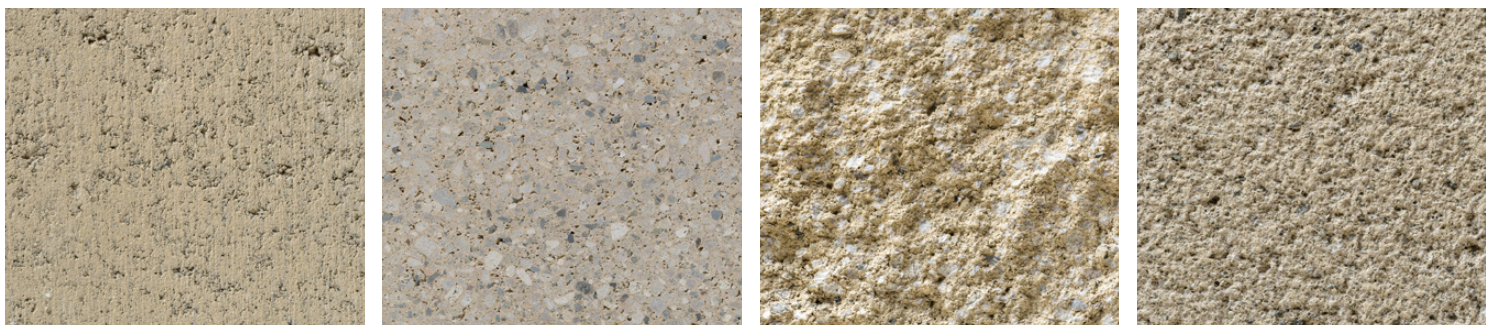
PRECISION

GROUND FACE

SPLIT FACE

SHOT BLAST

320 - STANDARD COLOR



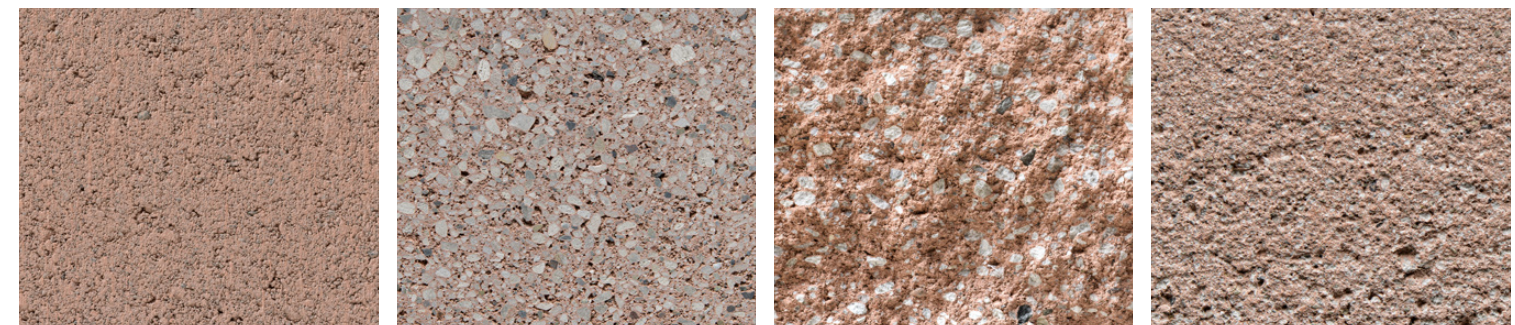
PRECISION

GROUND FACE

SPLIT FACE

SHOT BLAST

362 - STANDARD COLOR



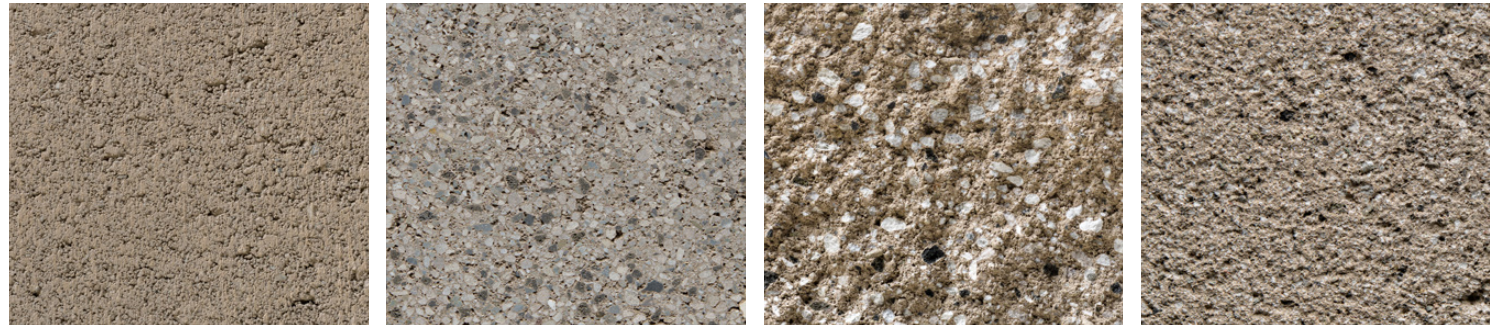
PRECISION

GROUND FACE

SPLIT FACE

SHOT BLAST

375 - STANDARD COLOR



PRECISION

GROUND FACE

SPLIT FACE

SHOT BLAST

397 - STANDARD COLOR



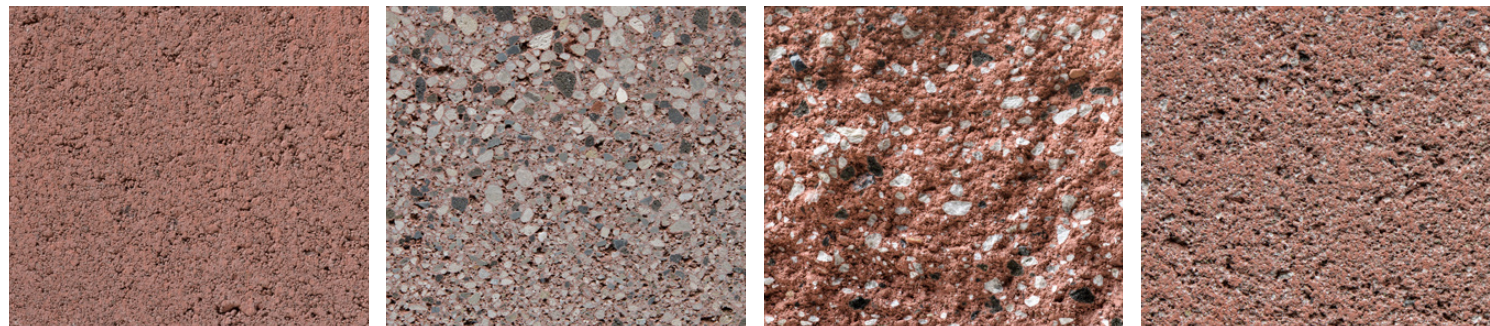
PRECISION

GROUND FACE

SPLIT FACE

SHOT BLAST

377 - STANDARD COLOR



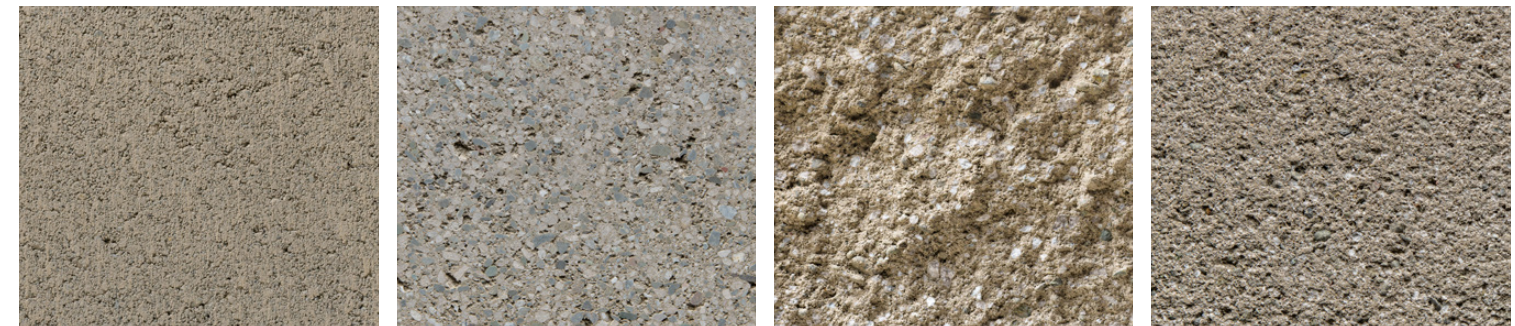
PRECISION

GROUND FACE

SPLIT FACE

SHOT BLAST

421 - STANDARD COLOR



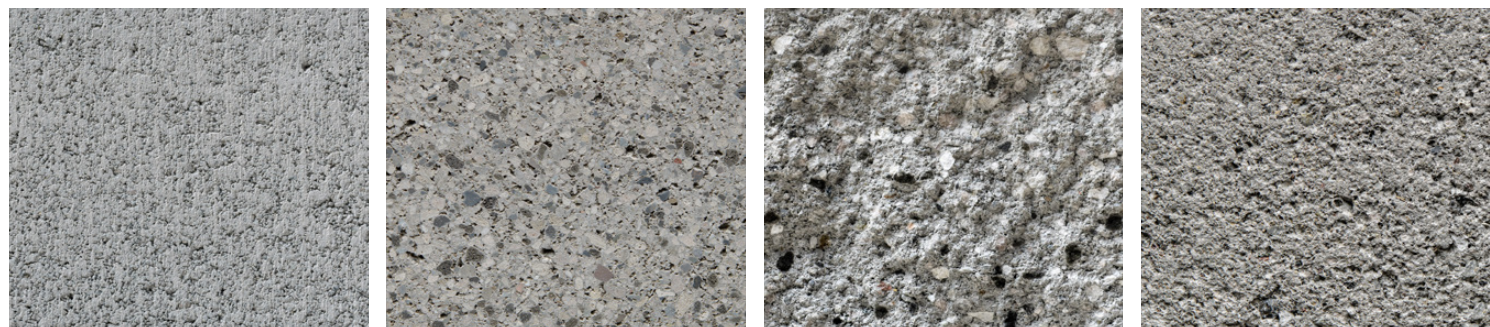
PRECISION

GROUND FACE

SPLIT FACE

SHOT BLAST

389 - STANDARD COLOR



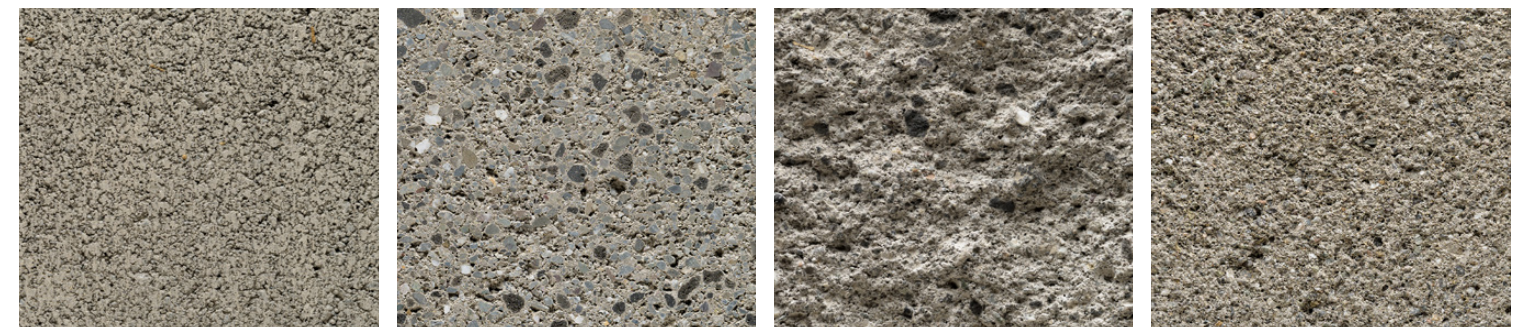
PRECISION

GROUND FACE

SPLIT FACE

SHOT BLAST

438 - STANDARD COLOR



PRECISION

GROUND FACE

SPLIT FACE

SHOT BLAST

390 - STANDARD COLOR



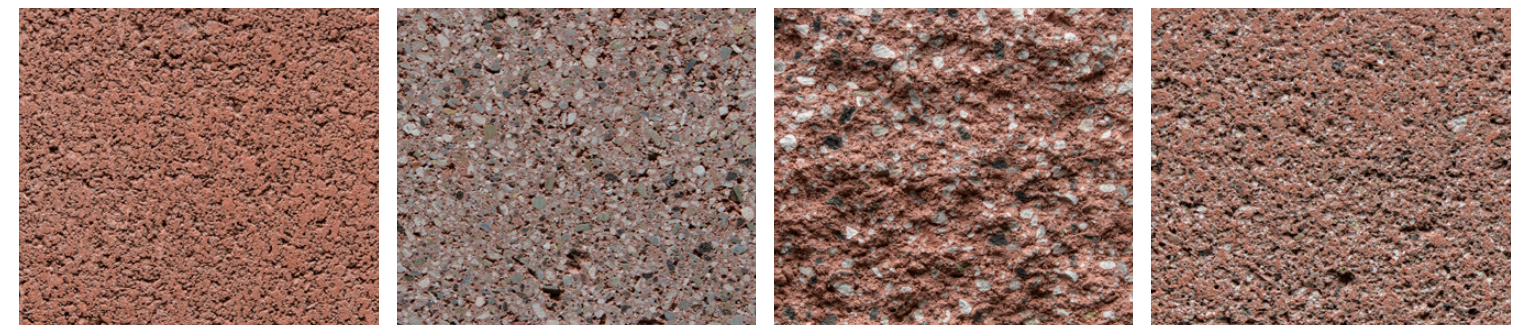
PRECISION

GROUND FACE

SPLIT FACE

SHOT BLAST

457 - STANDARD COLOR



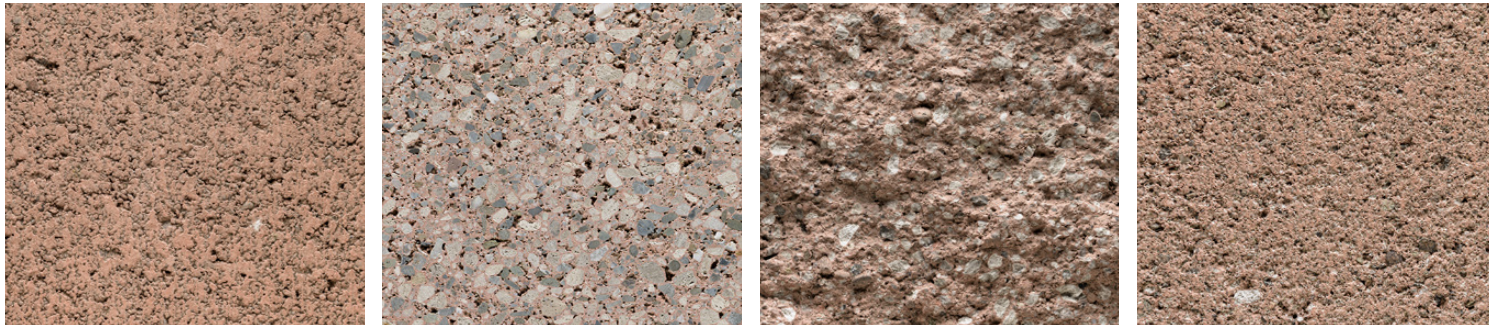
PRECISION

GROUND FACE

SPLIT FACE

SHOT BLAST

459 - STANDARD COLOR



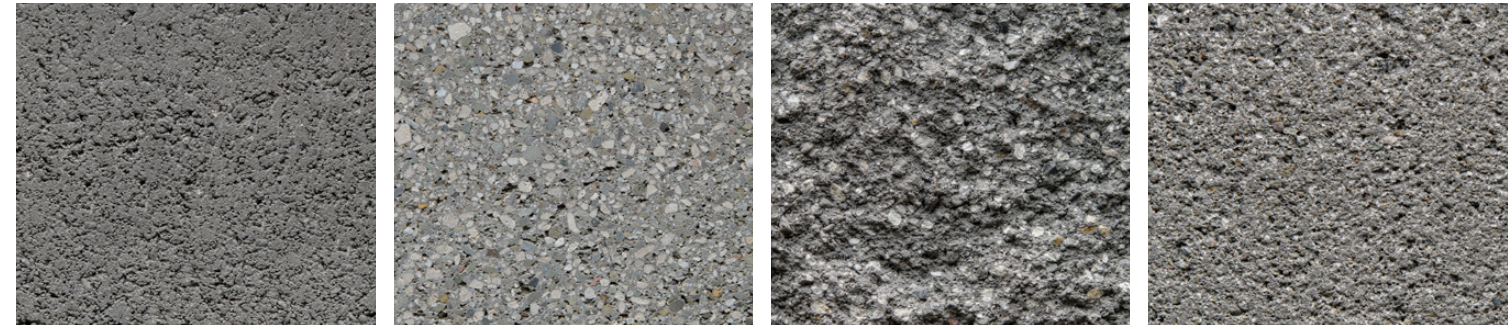
PRECISION

GROUND FACE

SPLIT FACE

SHOT BLAST

490 - STANDARD COLOR



PRECISION

GROUND FACE

SPLIT FACE

SHOT BLAST

481 - STANDARD COLOR



PRECISION

GROUND FACE

SPLIT FACE

SHOT BLAST

498 - STANDARD COLOR



PRECISION

GROUND FACE

SPLIT FACE

SHOT BLAST

484 - STANDARD COLOR



PRECISION

GROUND FACE

SPLIT FACE

SHOT BLAST

580 - STANDARD COLOR



PRECISION

GROUND FACE

SPLIT FACE

SHOT BLAST

489 - STANDARD COLOR



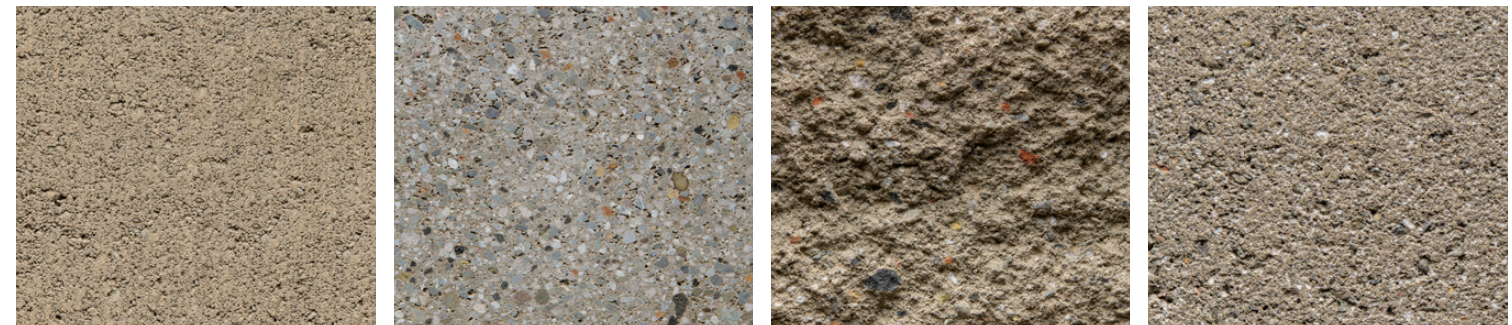
PRECISION

GROUND FACE

SPLIT FACE

SHOT BLAST

621 - STANDARD COLOR



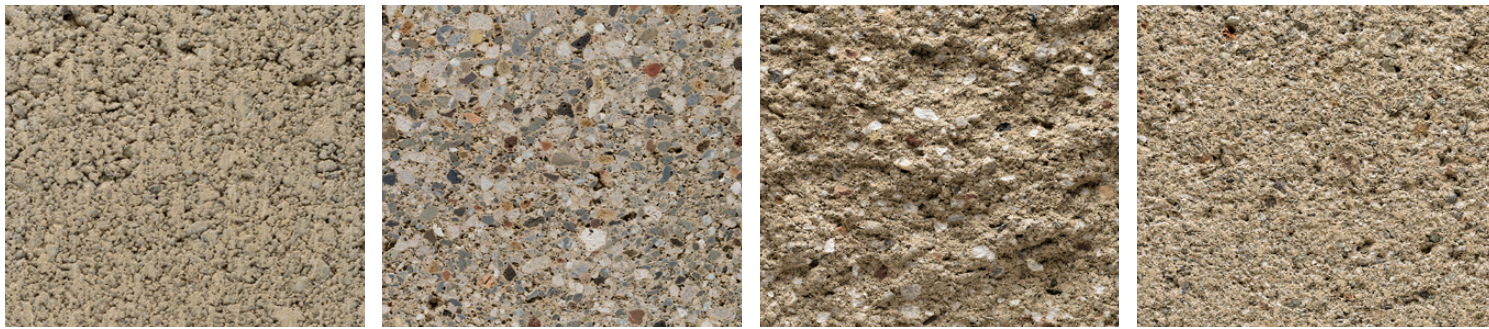
PRECISION

GROUND FACE

SPLIT FACE

SHOT BLAST

646 - STANDARD COLOR



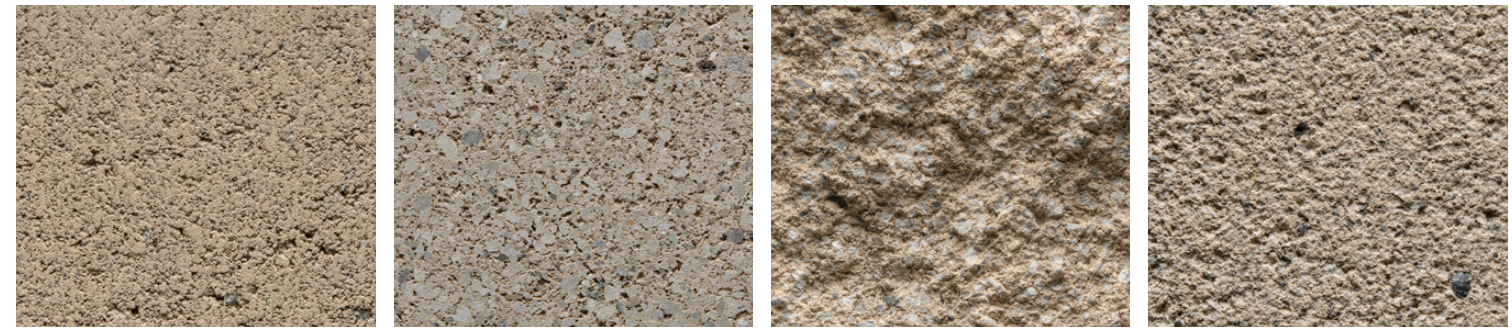
PRECISION

GROUND FACE

SPLIT FACE

SHOT BLAST

002 - PREMIUM COLOR



PRECISION

GROUND FACE

SPLIT FACE

SHOT BLAST

769 - STANDARD COLOR



PRECISION

GROUND FACE

SPLIT FACE

SHOT BLAST

205 - PREMIUM COLOR



PRECISION

GROUND FACE

SPLIT FACE

SHOT BLAST

790 - STANDARD COLOR



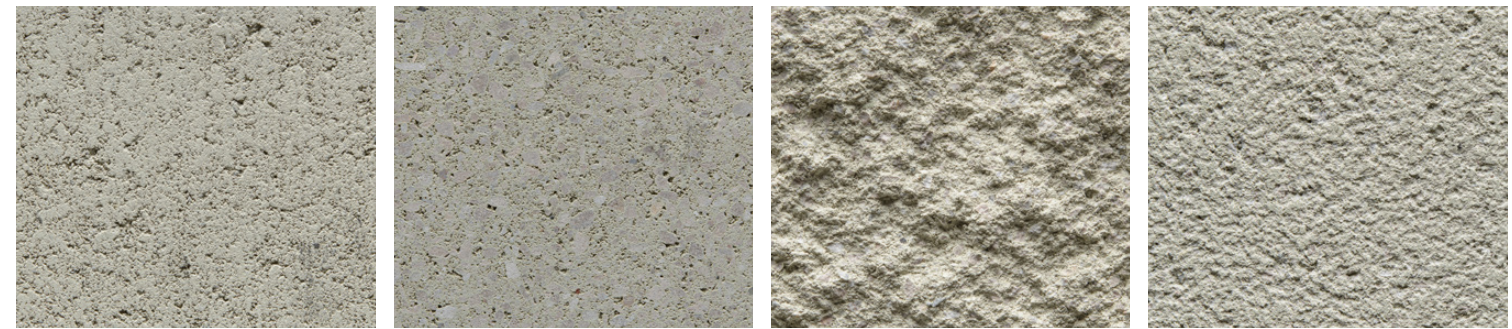
PRECISION

GROUND FACE

SPLIT FACE

SHOT BLAST

292 - PREMIUM COLOR



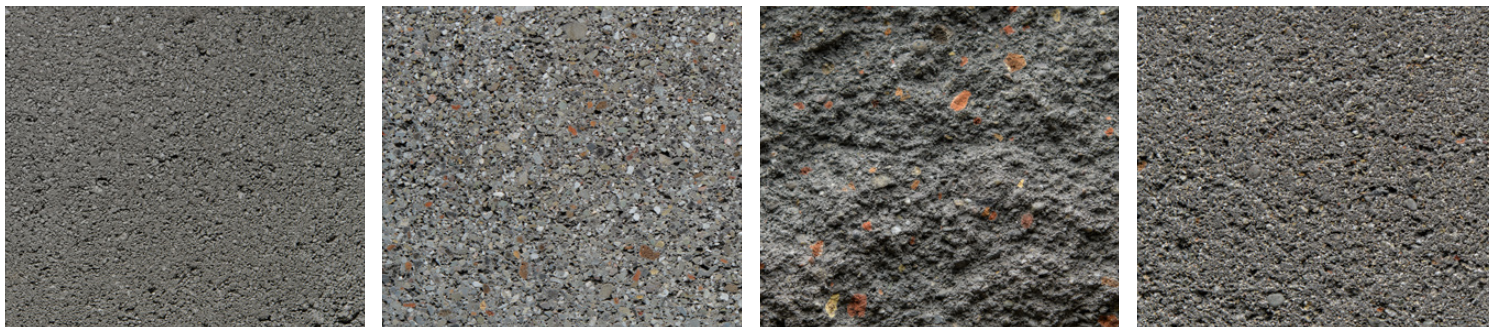
PRECISION

GROUND FACE

SPLIT FACE

SHOT BLAST

791 - STANDARD COLOR



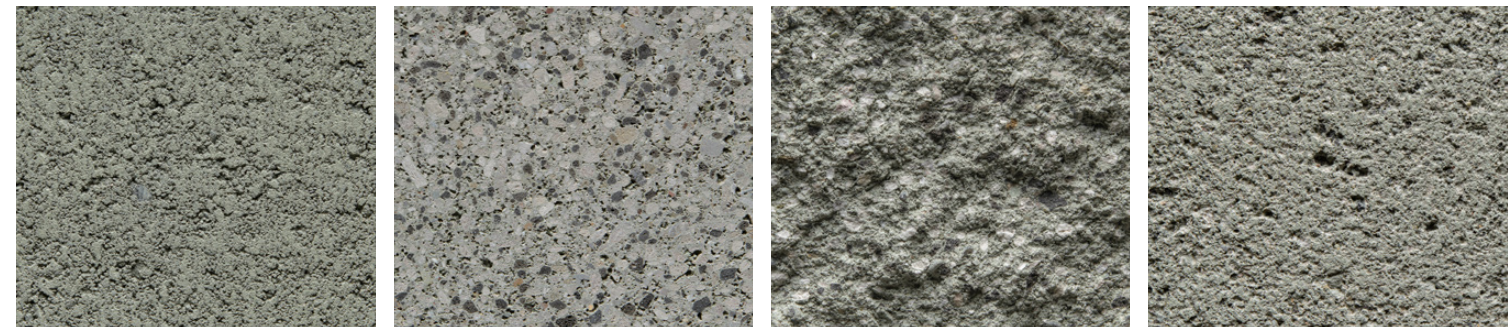
PRECISION

GROUND FACE

SPLIT FACE

SHOT BLAST

296 - PREMIUM COLOR



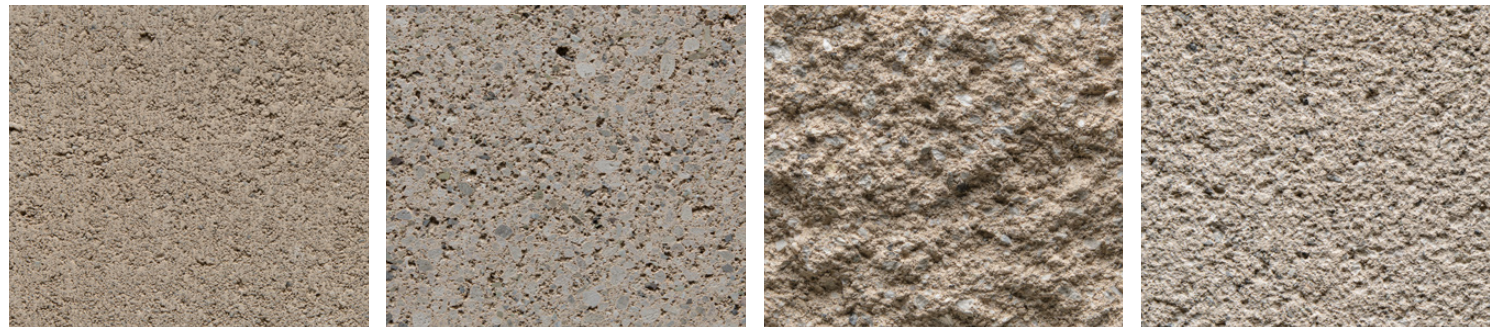
PRECISION

GROUND FACE

SPLIT FACE

SHOT BLAST

309 - PREMIUM COLOR



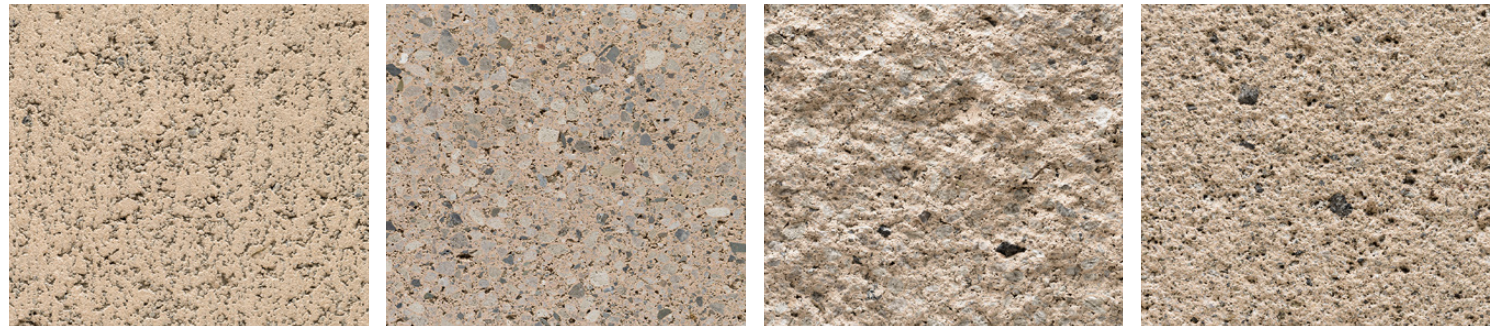
PRECISION

GROUND FACE

SPLIT FACE

SHOT BLAST

318 - PREMIUM COLOR



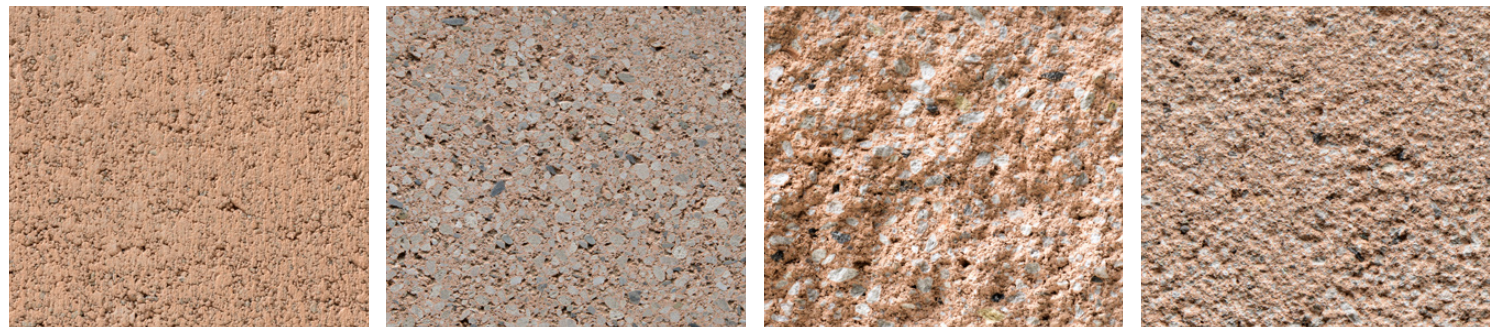
PRECISION

GROUND FACE

SPLIT FACE

SHOT BLAST

343 - PREMIUM COLOR



PRECISION

GROUND FACE

SPLIT FACE

SHOT BLAST

468 - PREMIUM COLOR



PRECISION

GROUND FACE

SPLIT FACE

SHOT BLAST

476 - PREMIUM COLOR



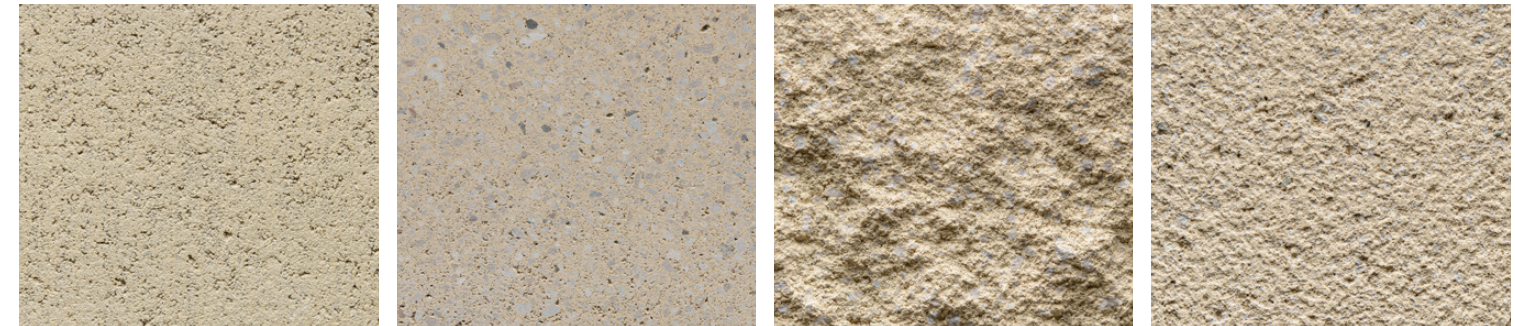
PRECISION

GROUND FACE

SPLIT FACE

SHOT BLAST

505 - PREMIUM COLOR



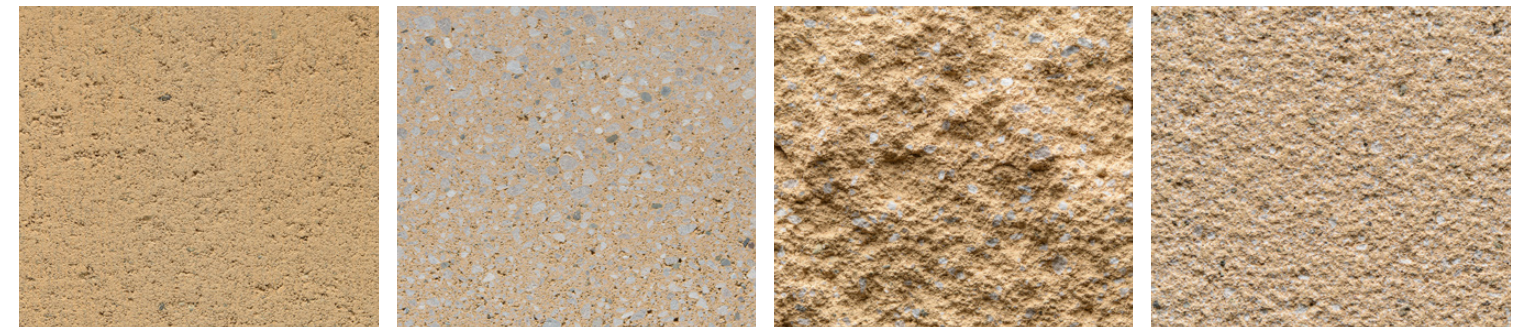
PRECISION

GROUND FACE

SPLIT FACE

SHOT BLAST

526 - PREMIUM COLOR



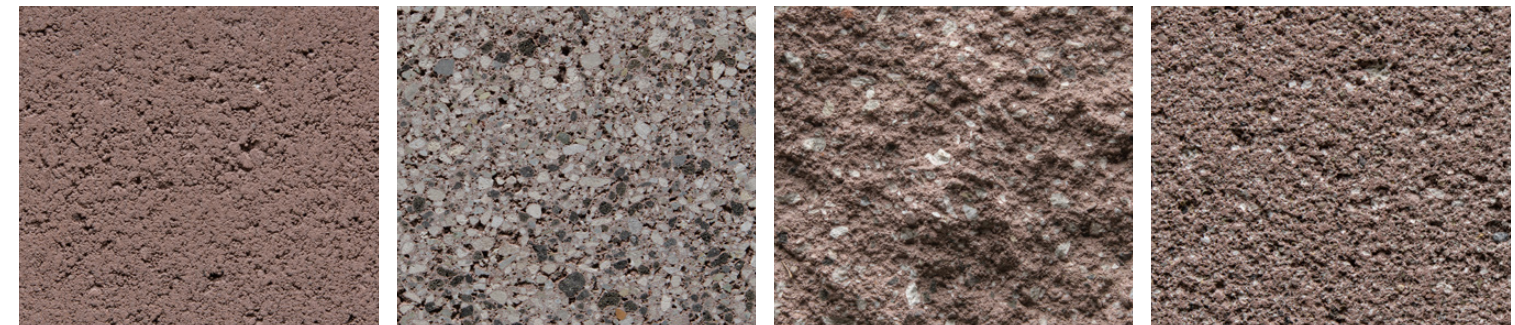
PRECISION

GROUND FACE

SPLIT FACE

SHOT BLAST

550 - PREMIUM COLOR



PRECISION

GROUND FACE

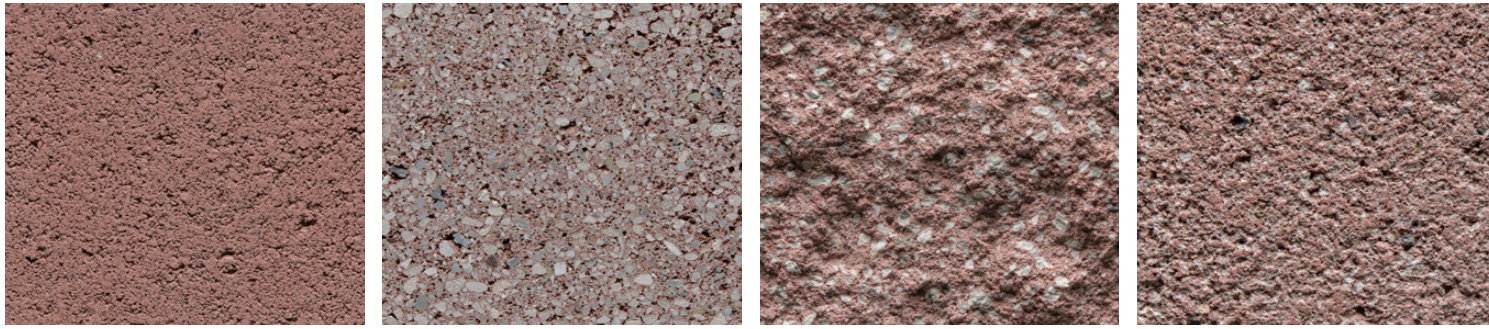
SPLIT FACE

SHOT BLAST

CMU | COLORS

FOR MORE INFORMATION
Contact your local dealer, contractor or
visit to basalite-cmu.com

560 - PREMIUM COLOR



PRECISION

GROUND FACE

SPLIT FACE

SHOT BLAST

619 - PREMIUM COLOR



PRECISION

GROUND FACE

SPLIT FACE

SHOT BLAST

660 - PREMIUM COLOR



PRECISION

GROUND FACE

SPLIT FACE

SHOT BLAST

W1 - PREMIUM COLOR



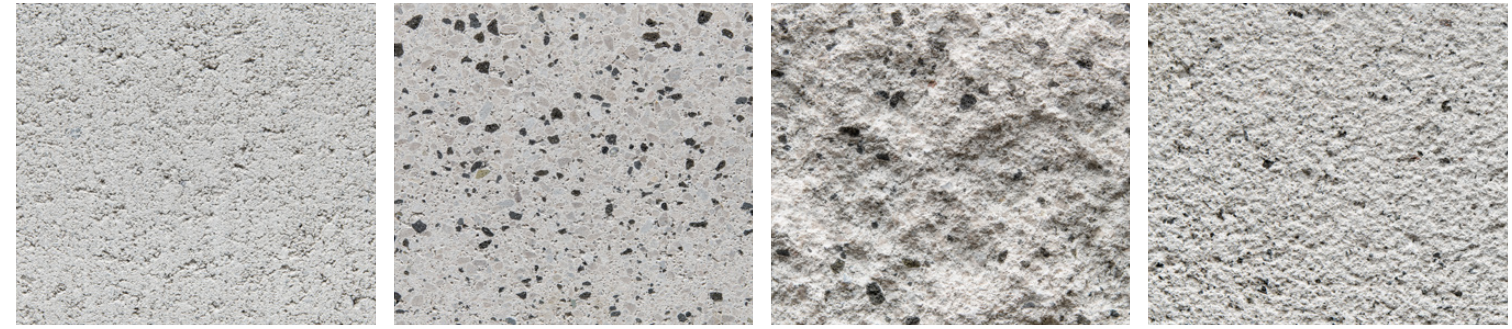
PRECISION

GROUND FACE

SPLIT FACE

SHOT BLAST

W11 - PREMIUM COLOR



PRECISION

GROUND FACE

SPLIT FACE

SHOT BLAST



MORTAR | COLORS

STANDARD MORTAR COLORS



PREMIUM MORTAR COLORS



CMU | TEXTURES

FOR MORE INFORMATION
Contact your local dealer, contractor
or visit to basalite-cmu.com



PRECISION



GROUND FACE



SPLIT FACE



SHOT BLAST



Giraffe Barn | Sacramento, California

 **BASALITE**[®]
Concrete Products

605 Industrial Way
Dixon, CA 95620
800-776-6690

11888 West Linne Road
Tracy, CA 95376
800-776-6690

1201 Golden State Blvd.
Selma, CA 93662
559-896-0753

BASALITE-CMU.COM

ALBERTA • BRITISH COLUMBIA • CALIFORNIA • COLORADO • IDAHO • NEVADA • OREGON • WASHINGTON

©2024 Basalite® Concrete Products. All trademarks ® are registered trademarks. 01/19/2024